

RVE

1901

REMINGTON & VERNICK ENGINEERS

9 ALLEN STREET
TOMS RIVER, NJ 08753
(732) 286-9220, FAX (732) 505-8416
WEB ADDRESS : RVE.COM
Certification of Authorization: 24 GA 28003300
Excellence • Innovation • Service

DATE: 7/17/2024

ALAN B. DITTENHOFER

NJ PROFESSIONAL ENGINEER LIC. No. 37672

PLANS WHICH DO NOT BEAR AN EMBOSSED SEAL ARE NOT VALID.

ALL DOCUMENTS PREPARED BY REMINGTON & VERNICK ENGINEERS AND AFFILIATES ARE INSTRUMENTS OF SERVICE IN RESPECT OF THE PROJECT. THEY ARE NOT INTENDED OR REPRESENTED TO BE SUITABLE FOR REUSE BY OWNER OR OTHERS ON EXTENSIONS OF THE PROJECT OR ON ANY OTHER PROJECT. ANY REUSE WITHOUT WRITTEN VERIFICATION OR ADAPTATION BY REMINGTON & VERNICK ENGINEERS AND AFFILIATES FOR THE SPECIFIC PURPOSE INTENDED WILL BE AT OWNERS SOLE RISK AND WITHOUT LIABILITY OR LEGAL EXPOSURE TO REMINGTON & VERNICK ENGINEERS AND AFFILIATES. AND OWNER SHALL INDEMNIFY AND HOLD HARMLESS REMINGTON & VERNICK ENGINEERS AND AFFILIATES FROM ALL CLAIMS, DAMAGES, LOSSES AND EXPENSES ARISING OUT OF OR RESULTING THEREFROM.

NO.	REVISION	DATE	BY

OVERALL PLAN (2)

BOROUGH OF SEASIDE PARK

BAYFRONT WAVE ENERGY DISSIPATION & FLOOD MITIGATION - OPTION #1

BOROUGH OF SEASIDE PARK OCEAN COUNTY NEW JERSEY

DRAWN BY: BK

DESIGN BY: PH / TD

CHECKED BY: PH

SCALE: AS SHOWN

DATE: 6 / 2024

JOB No.: 1528-U-085

2 of 5

N:\DRAW\Seaside Park\1528\085\U085-OVERALL-PLANS



ALAN B. DITTENHOFER
NJ PROFESSIONAL ENGINEER LIC. No. 37672

ALL DOCUMENTS PREPARED BY REMINGTON & VERNICK ENGINEERS AND AFFILIATES ARE INSTRUMENTS OF SERVICE IN RESPECT OF THE PROJECT. THEY ARE NOT INTENDED OR REPRESENTED TO BE SUITABLE FOR REUSE BY OWNER OR OTHERS ON EXTENSIONS OF THE PROJECT OR ON ANY OTHER PROJECT. ANY REUSE WITHOUT WRITTEN VERIFICATION OR ADAPTATION BY REMINGTON & VERNICK ENGINEERS AND AFFILIATES FOR THE SPECIFIC PURPOSE INTENDED WILL BE AT OWNERS SOLE RISK AND WITHOUT LIABILITY OR LEGAL EXPOSURE TO REMINGTON & VERNICK ENGINEERS AND AFFILIATES. ANY OWNER OR USER OF ANY SUCH DOCUMENTS SHALL HOLD REMINGTON & VERNICK ENGINEERS AND AFFILIATES FROM ALL CLAIMS, DAMAGES, LOSSES AND EXPENSES ARISING OUT OF OR RESULTING THEREFROM.

[illegible]

BOROUGH OF SEASIDE PARK
BAYFRONT WAVE ENERGY DISSIPATION

<u>DRAWN BY :</u> BK	<u>DESIGN BY :</u> PH / TD	<u>CHECKED BY :</u> PH	<u>SCALE :</u> AS SHOWN
<u>DATE :</u> 6 / 2024		<u>SHEET No. :</u> 3 of 5	
<u>JOB No. :</u> 1528-U-085			

N:\DRAW\Seaside Park\1528U085\U085-OVERALL-PLANS

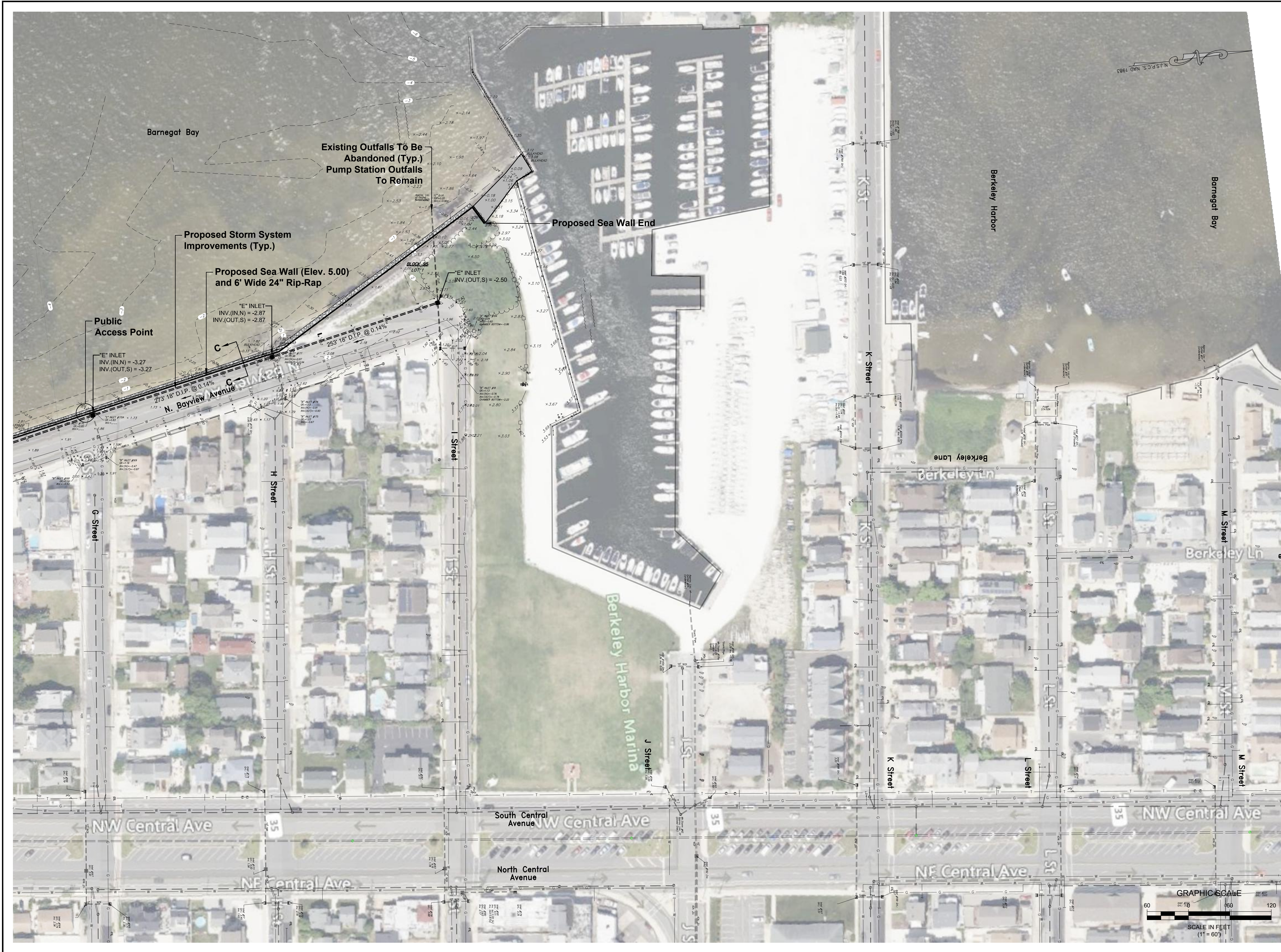


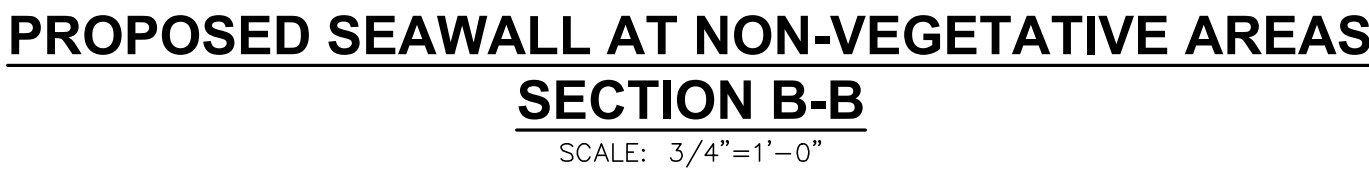
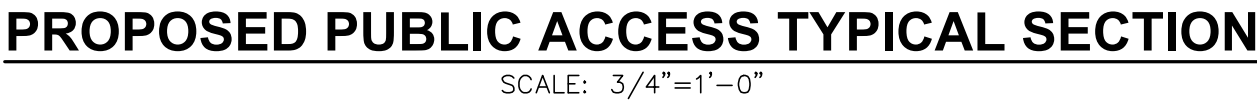


PLANS WHICH DO NOT BEAR THE SIGNATURE OF AN EMBOSSED SEAL ARE NOT VALID.

ALL DOCUMENTS PREPARED BY REMINGTON & VERMICK ENGINEERS AND AFFILIATES ARE INSTRUMENTS OF SERVICE IN RESPECT OF THE PROJECT. THEY ARE NOT TO BE OWNED OR REPRESENTED TO BE SUITABLE FOR THE PROJECT OR OTHERS ON EXTENSIONS OF THE PROJECT OR ANY OTHER PROJECT AND REUSE WITHOUT THE WRITTEN VERIFICATION OF A REMINGTON & VERMICK ENGINEERS AND AFFILIATES FOR THE SPECIFIC PURPOSE INTENDED WILL BE AT OWNERS SOLE RISK TO REMINGTON & VERMICK ENGINEERS AND AFFILIATES, AND CLAIMS FOR ANY LIABILITY OR LEGAL EXPOSURE TO REMINGTON & VERMICK ENGINEERS AND AFFILIATES, AND OWNERS, CONTRACTORS, SUBCONTRACTORS, SUPPLIERS, AND OTHERS, SHALL BE LIMITED TO THE EXTENT OF THE INSURANCE COVERAGE. REMINGTON & VERMICK ENGINEERS AND AFFILIATES FROM ALL CLAIMS, DAMAGES, LOSSES AND EXPENSES ARISING OUT OF OR FROM THE RESULTS THEREFROM.

BOROUGH OF SEASIDE PARK		BAYFORD WAVE ENERGY DISSIPATION & FLOOD MITIGATION - OPTION #1	NEW ENERGY
DRAWN BY: BK	DESIGN BY: PH / TD	CHECKED BY: PH	SCALE: AS SHOWN
DATE: 6 / 2024	SHEET No.:		
JOB No.: 1528-U-085	4 of 5		
(VIRAM) Seaside Park (1528U085) \085--OVERALL PLAN			





ALL DOCUMENTS PREPARED BY REMINGTON & VERNICK ENGINEERS AND AFFILIATES ARE INSTRUMENTS OF SERVICE IN RESPECT OF THE PROJECT. THEY ARE NOT INTENDED OR REPRESENTED TO BE SUITABLE FOR REUSE BY OWNER OR OTHERS ON EXTENSIONS OF THE PROJECT OR ON ANY OTHER PROJECT. ANY REUSE WITHOUT WRITTEN VERIFICATION OR ADAPTATION BY REMINGTON & VERNICK ENGINEERS AND AFFILIATES FOR THE SPECIFIC PURPOSE INTENDED WILL BE AT OWNERS SOLE RISK AND REMINGTON & VERNICK ENGINEERS AND AFFILIATES, AND OWNERS, SHALL INDEMNIFY AND HOLD HARMLESS REMINGTON & VERNICK ENGINEERS AND AFFILIATES FROM ALL CLAIMS, DAMAGES, LOSSES AND EXPENSES ARISING OUT OF OR RESULTING THEREFROM.

[illegible]

TYPICAL SECTIONS

BOROUGH OF SEASIDE PARK
BAYFRONT WAVE ENERGY DISSIPATION
A FLORIDA INITIATION ACTION "A"

DO NOT WRITE IN THESE SPACES

DRAWN BY: BK	DESIGN BY: PH / TD	CHECKED BY: PH	SCALE: AS SHOWN
DATE: 6 / 2024		SHEET No.: 5 of 5	
JOB No.: 1528-U-085			

N: \\DRAW\\Seaside Park\\1528U085\\Details\\Section: